

Customer :

customer

Customer part :

customer part

Comment :

Comment

S1=1.74

S2=2.12

Tmax=452

Tp S2=491.0

PI=0.45

HI=121

Sample =1627.10

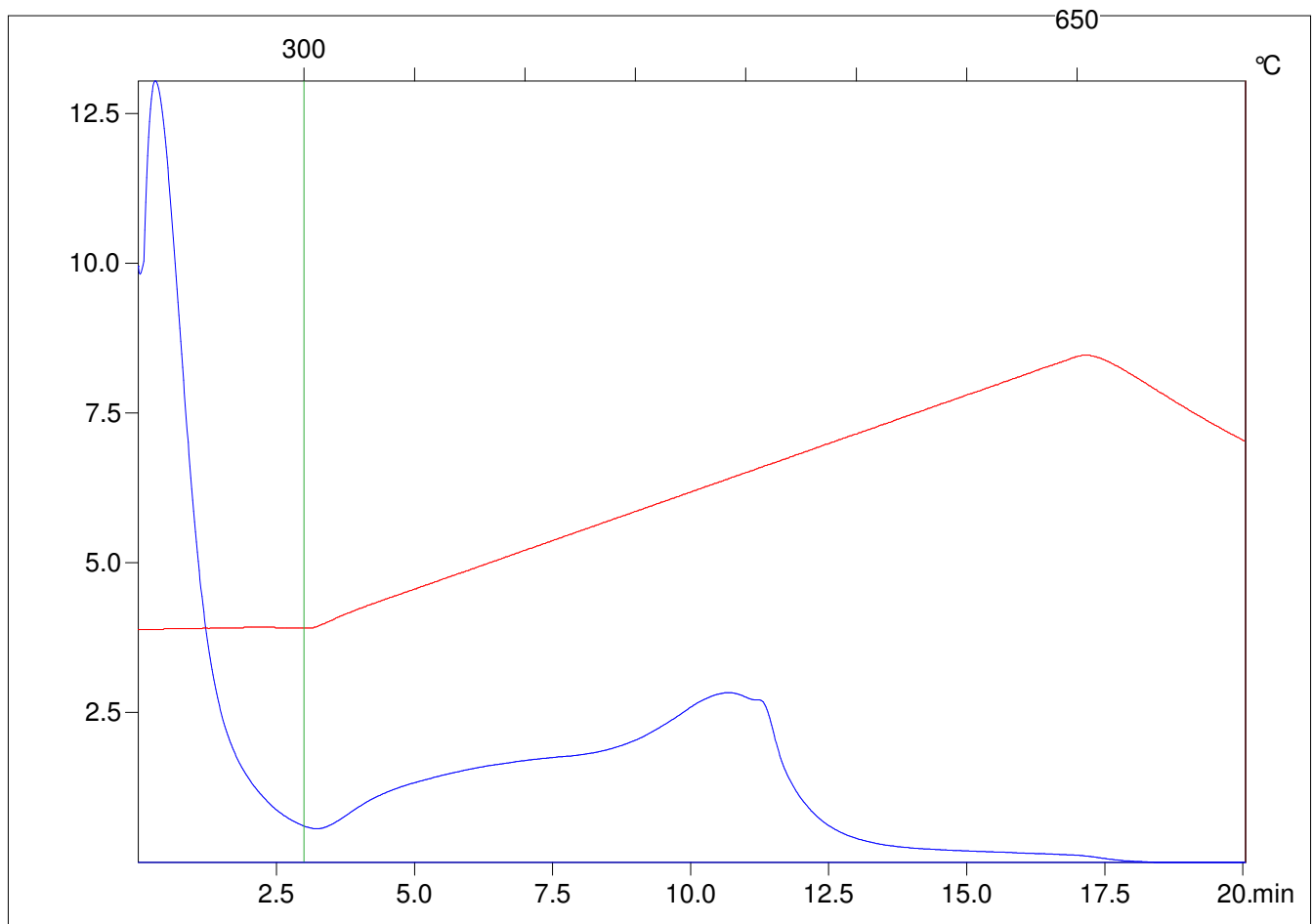
Method =Bulk Rock

Cycle=Basic

KFID(10*9)=1444

Qty =70.5

TOC=1.75



C:\VINC\PK1792\PK012.R00 : FID pyrolysis graphic

State

Pyro Status

Oxi Status